



432 South River St., Hackensack, N.J. 07601 (201) 641-4566

FOTAR INSTALLATION, VERTICAL ENLARGER

EIGHT AND TEN FOOT, WALL MOUNT AND FREESTANDING

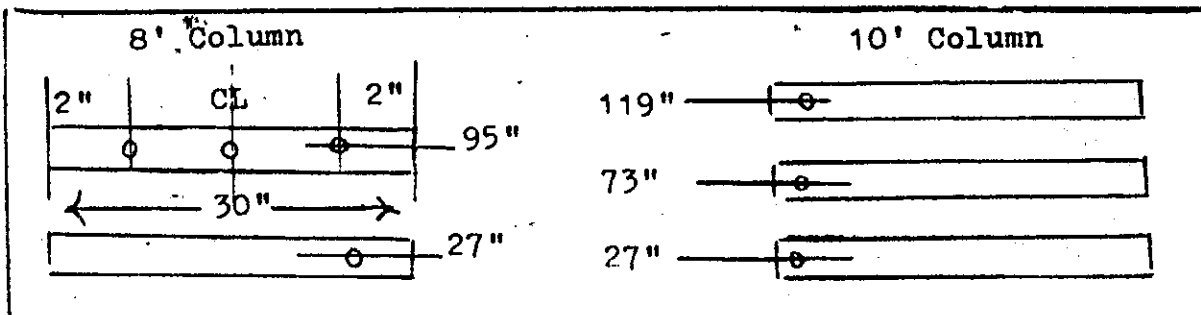
1. PREPARATION

A. FREESTANDING.

Floor should be level and solid. Sufficient headroom for 8' and 10' columns is  $9\frac{1}{2}'$  and  $11\frac{1}{2}'$  respectively, when enlarger is equipped with Berkey Dichroic lamphouse. If a ceiling opening must be cut it should be at least 40 x 40".

B. WALL MOUNT.

A good wall is necessary. If the wall is cinderblock, brick or poured cement 2 x 4 lumber can be attached at the following center lines:



The 2 x 4's should be 30" long minimum and attached with 3" long (min). 5/16 dia. (min) lag bolts in shields. Drill holes in wood as indicated in sketch above.

For interior walls of sheet rock or plaster the 2 x 4 must be made long enough to capture 3 or more studs from either side of the wall as shown in drawing #1.

2. PRELIMINARY ASSEMBLY FREESTANDING & WALL MOUNT

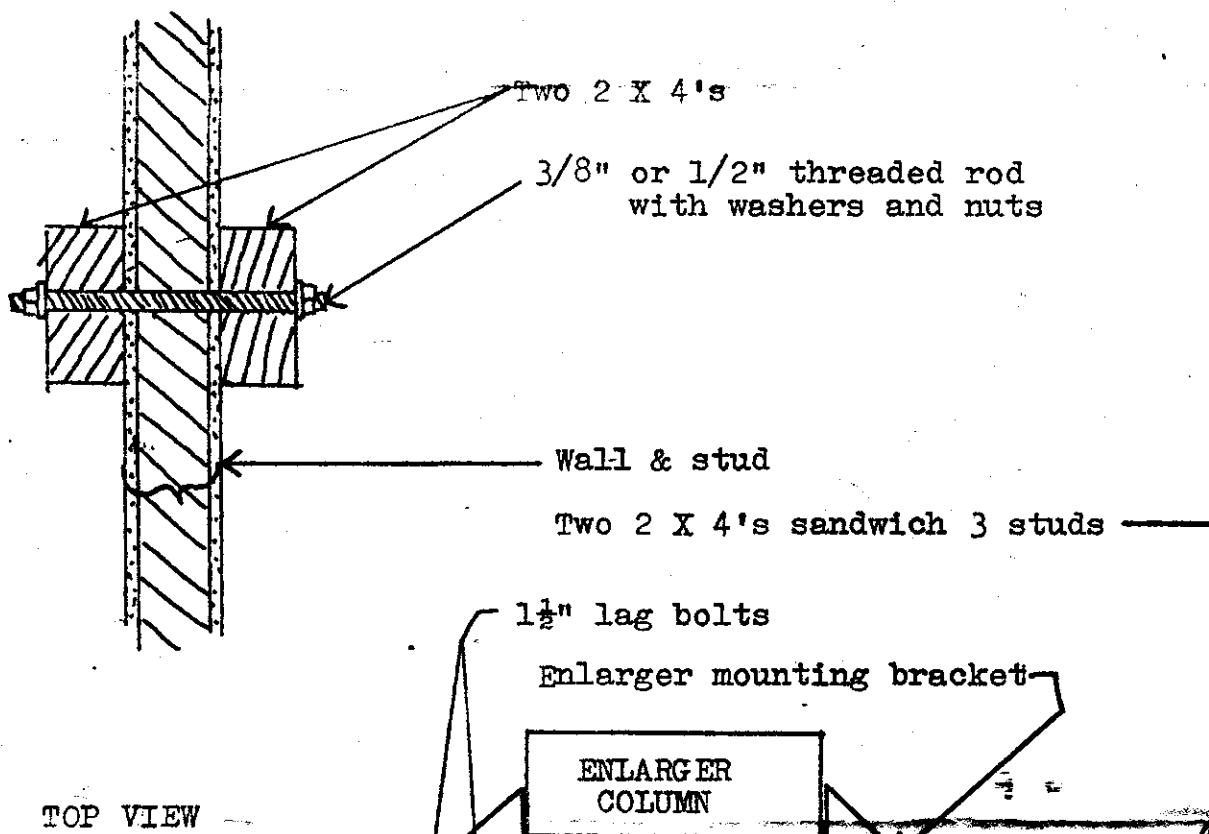
1. Slide negative stage bridge onto column approx. to middle.
2. Slide lens stage bridge onto column to meet negative bridge.
3. Position clamps above negative bridge and below lens bridge on the bearing rails.
4. Slide table frame onto column with lock released.
5. Lock table frame in upper most position.



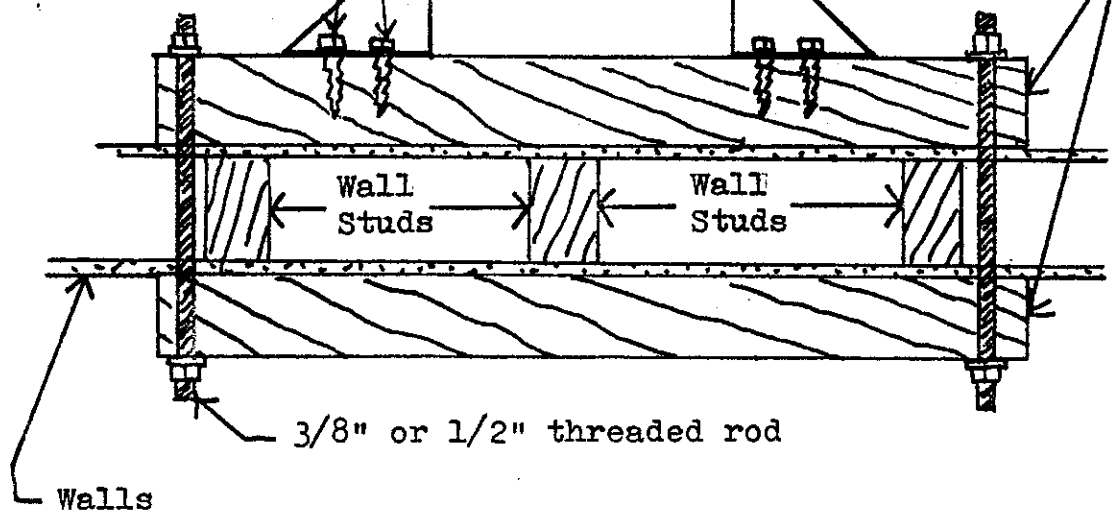
432 South River St., Hackensack, N.J. 07601 (201) 641-4566

FOTAR VERTICAL ENLARGER  
MOUNTING ON PARTITION WALLS

SIDE VIEW



TOP VIEW





432 South River St., Hackensack, N.J. 07601 (201) 641-4566

## FOTAR VERTICAL

### 3. SECONDARY ASSEMBLY

#### A. FREESTANDING MODELS

1. Two or three persons are required for the following steps.
  2. Remove nuts, bolts and washers from leg assemblies.
  3. Stand column assembly in position vertically.
  4. Position legs on outside of column and push stud through lower hole in column.
  5. Place steel reinforcing plate over stud from inside of column.
  6. Put washer and nut on stud; and nuts, bolts and washers through two upper holes finger tight.
  7. Repeat for second leg.
  8. Tighten bolts making sure that the enlarger column remains perfectly vertical using a good 24" level.
  9. Double-check the tightness of all bolts and the vertical alignment of the column.
- \* NOTE: Vertical alignment is not critical as negative, lens and copyboard stages have been factory aligned. However, if the column is not erected reasonably vertical, the counterweights will not hang correctly or run smoothly.

#### B. WALL MOUNT MODELS

1. Two or three persons are required for the following steps.
2. Fasten two top brackets to the column.
3. Stand the column in a vertical position leaning against the top 2 x 4.
4. With one person supporting the front of the table frame, bring the column to a full vertical position and secure the top brackets.
5. Check column is vertical using a good 24" level before proceeding.
6. Bolt the remaining brackets in position to the column and the 2 x 4.
7. Be sure to leave as much space as possible between the column and wall and still-mount the column perfectly vertical. This space will be necessary for installing and servicing the weights and cables.
8. Double check tightness of all bolts and vertical alignment of the column.



432 South River St., Hackensack, N.J. 07601 (201) 641-4566

## FOTAR VERTICAL

### 4. CABLE AND COUNTER WEIGHT ASSEMBLY FREESTANDING AND WALL MOUNT

#### A. LENS CABLE (Longer)

Before proceeding study drawing #2

1. Push 5/16 bolt supplied through top left hole in lens bridge casting. Place washer, cable, washer and nut on bolt. Finger tighten.
2. Cable goes over upper right pulley clockwise.
3. Cable goes to left side of right table pulley, loops once in front counter-clockwise.
4. Cable goes over upper most right pulley and into rear of column. Maintain some tension to keep cable taut.
5. Attach lens (single) weight to cable with  $\frac{1}{4}$ " bolt and nut supplied.
6. Tighten 5/16 nut on lens bridge casting securely.

#### B. NEGATIVE CABLE (shorter)

1. Push 5/16 bolt supplied through bottom right hole in negative bridge casting.
2. Place washers, cable, washer and nut on bolt. Finger tighten.
3. Cable goes over upper left pulley counter-clockwise.
4. Cable goes to left side of left table pulley, loops once in front counter-clockwise.
5. Cable goes over upper most left pulley and into rear of column. Maintain some tension to keep cable taut.
6. Attach negative (double) weight to cable using  $\frac{1}{4}$ " bolt and nut supplied.
7. Tighten 5/16 nut on negative bridge casting securely.

#### C. TABLE WEIGHT/S

1. Attach longer weight to left side of table frame using two 5/16 bolts supplied.
  2. Attach shorter weight to right side of table frame using bolt supplied.
- \* NOTE: If only one weight is supplied always attach to left side of table frame.



432 South River St., Hackensack, N.J. 07601 (201) 641-4566

PAGE #5  
DRAWING # 2

FOTAR VERTICAL ENLARGER  
CABLE STRINGING DIAGRAM

